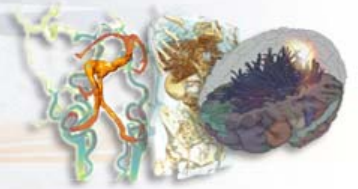


Working Group Meeting in Münster

March 17, 2010

- 10:00 – **Opening and Welcome**
Timo Ropinski, University of Münster
- 10:05 – **Interactive Feature Classification Techniques**
Jörg-Stefan Praßni , University of Münster
- 10:35 – **Surgeon-Centered 3D Visualizations**
Alexandra Baer, University of Magdeburg
- Coffee Break (11:05-11:15)**
- 11:15 – **Connectivity-Based Brain Parcellation**
Alessandro Crippa , University of Groningen
- 11:45 – **Visualizing the Effects of Uncertainty on Shape Variation in Fiber Tracts**
Ralph Brecheisen , TU Eindhoven
- Lunch Break (12:15-13:15)**
- 13:15 – **Voreen - Volume Rendering Engine Demo**
Jörg Mensmann, University of Münster
- 13:35 – **An Automated Software Assistant for Preoperative Planning of Orthopaedic Intervention Based on 3D Image Data**
Heiko Seim , ZIB Berlin
- 14:05 – **A Rapid Prototyping Framework for Medical Volume Visualizations**
Christian Rieder, Fraunhofer MEVIS, Bremen
- Coffee Break (14:35-14:50)**
- 14:50 – **3D Ultrasound and its Application in Cardiology**
Klaus Tiemann, University Hospital Münster
- 15:15 – **Visual Planning of Deep Brain Stimulation Interventions**
Norbert Lang, St. Barbara Hospital Hamm
- 15:40 – 16:45 **Excursion to the European Institute of Molecular Imaging (EIMI)**
with a subsequent shuttle service to the main station
(registration via email required)



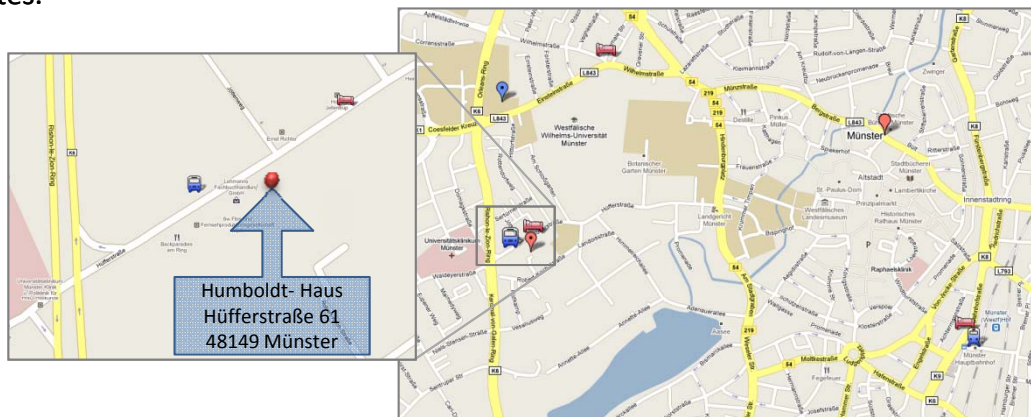


Working Group Meeting in Münster

March 17, 2010

How to get there?

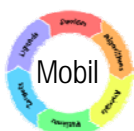
The meeting will take place in the Alexander von-Humboldt-Haus in Münster. To get there, you can take Bus number 12, 13 or 14 from Münster main station to Münster Jungeblodtplatz. The bus ride will approx. take 15 minutes.



EIMI Excursion

There will be a small excursion to the European Institute of Molecular Imaging (EIMI) right after the meeting. There we will visit the radiation protection area to see the small animal imaging lab including small animal PET and CT scanners.

From there a free shuttle service to Münster main station is available. Please register for the excursion and the shuttle by email: ropinski@math.uni-muenster.de



Sponsored by SFB 656 - Molecular Cardiovascular Imaging
www.sfbmobil.de